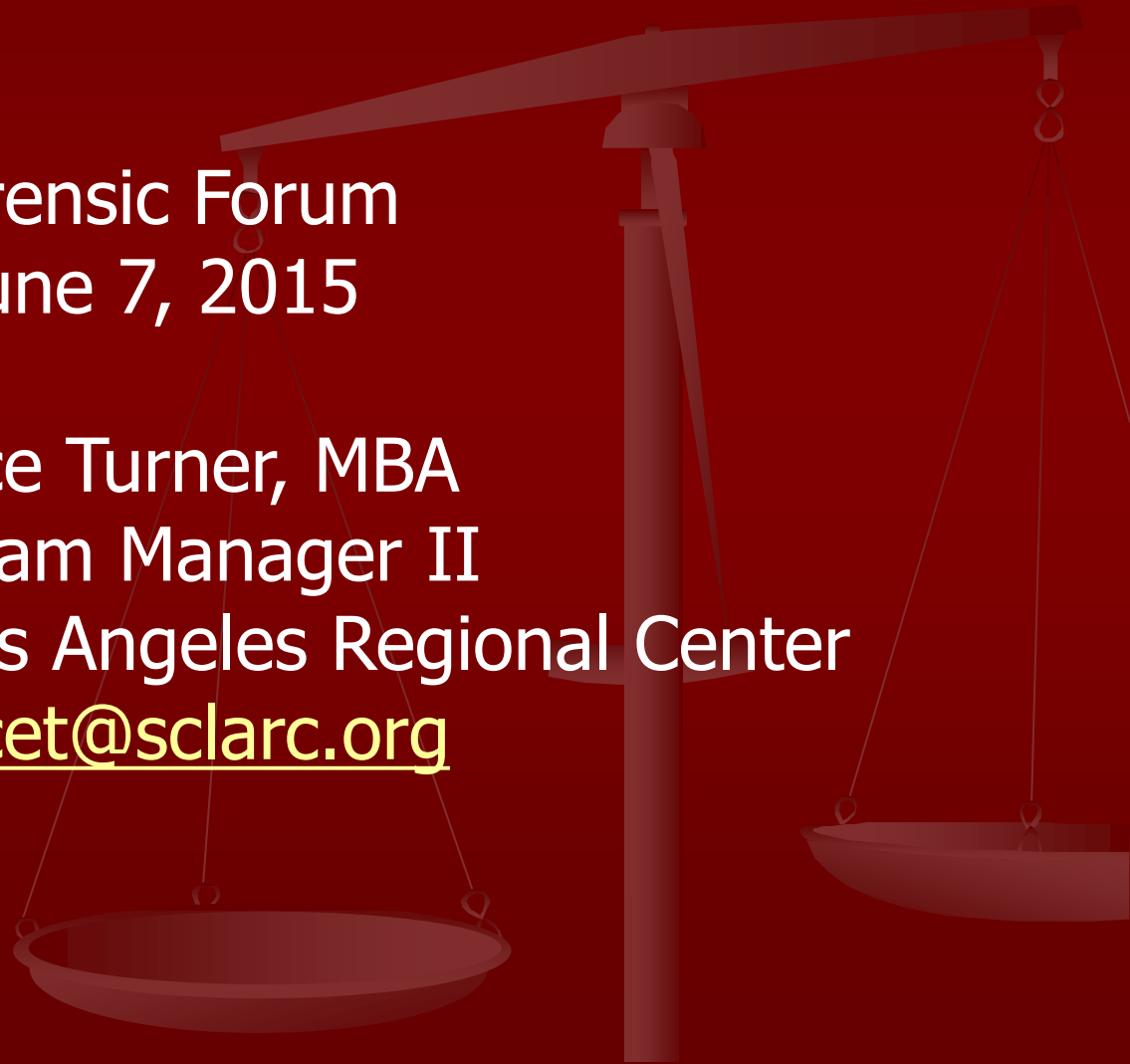


FORENSIC RELATIONSHIPS

Forensic Forum
June 7, 2015

Jenice Turner, MBA
Program Manager II
South Central Los Angeles Regional Center
jenicet@sclarc.org

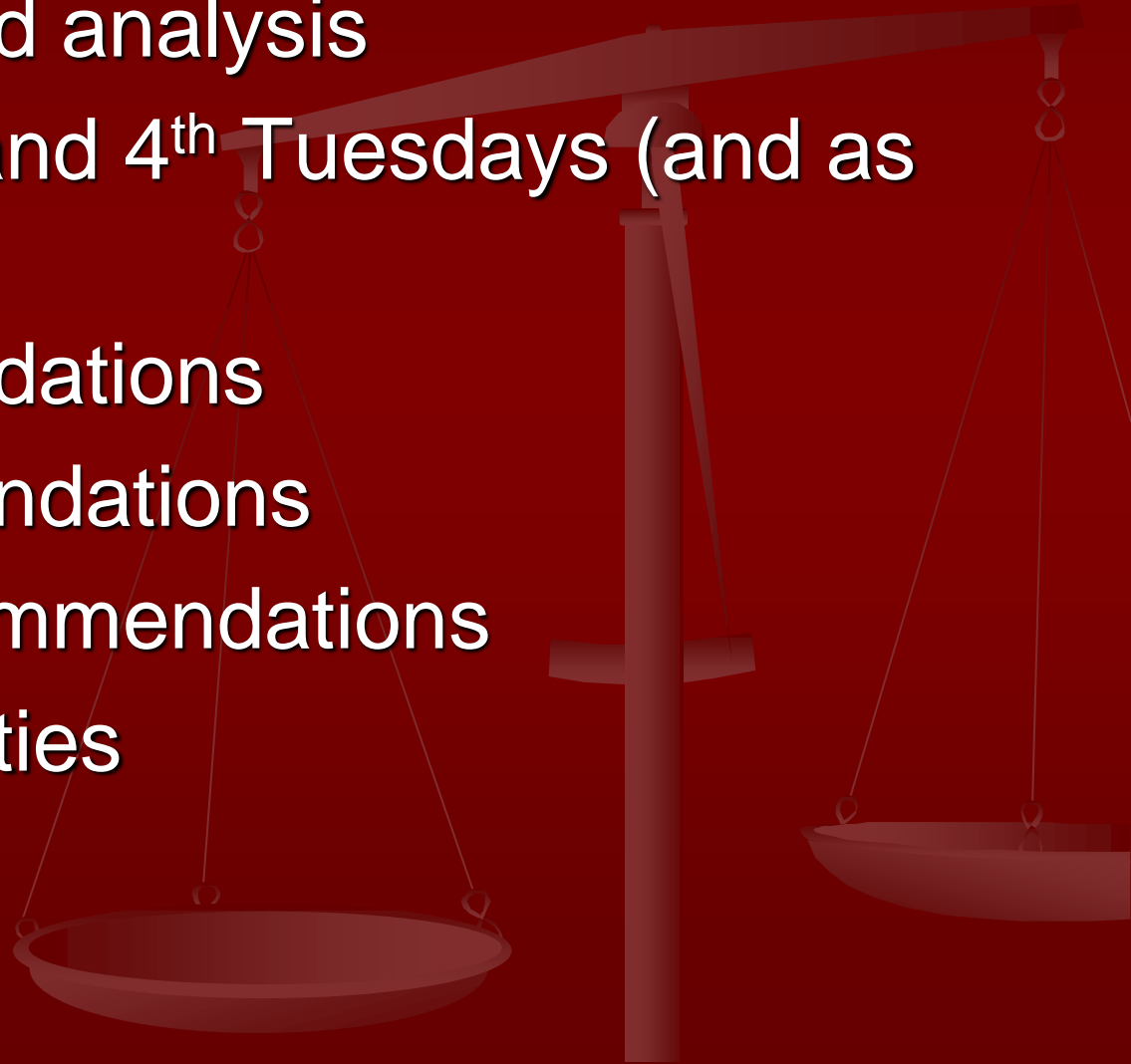


Ojectives

- Evaluate Consumer Needs
 - Identify Services and Supports
 - Coordinate Services and Supports
 - Monitor Services and Supports
 - Meet Consumer Needs
- 

Forensic Assessment Team (FAT)

- Case review and analysis
- Meetings - 2nd and 4th Tuesdays (and as needed)
- Jail Recommendations
- Court recommendations
- Treatment recommendations
- Follow-up activities



Multi-Agency Advisory Board (MAAB)

- Meets quarterly on the 3rd Monday of the month
- Review case studies
- Review current, pending, changes and new law affecting judicially involved consumers
- Discuss resources
- Discuss trends (recidivism, crime rates, arrest statistics)
- Agency Updates



MAAB Members

Department of Mental Health

County Probation Department

County Department of Children and Family Services

Office of the Public Defender

County District Attorney & City Attorney

Sheriffs Department


Los Angeles Police Department

State Parole Office (Department of Corrections)

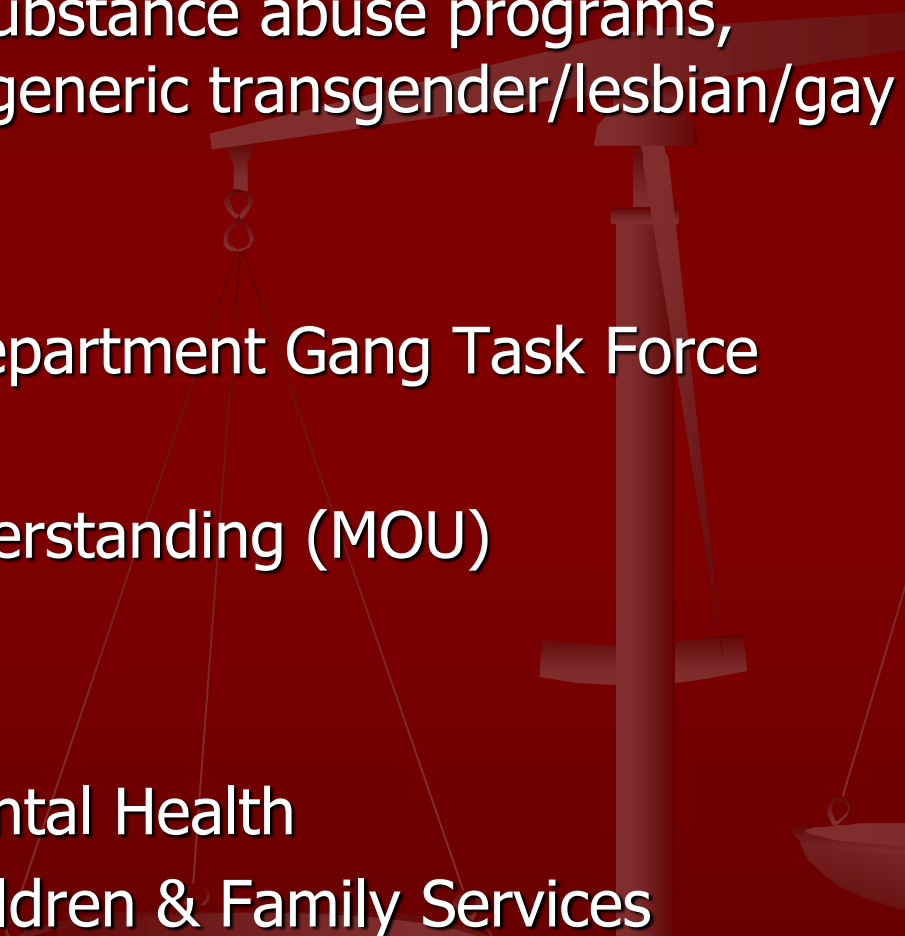
Los Angeles County Regional Centers



Regional Center Services – Therapeutic Intervention

- Specialized Services Unit (SSU)
 - Vended sex offender treatment Jail Liaison/ Intake, Regional Center Module, & Program for Judicially Involved
 - Juvenile Hall Liaison
 - Court Liaison
 - Forensic Assessment Team (FAT)
 - Specialized Residential Facility
 - Forensic Supported Living Services (SLS)
 - Competency Training
 - Mental Health (crisis support/ anger management)
 - Bio Behavioral Consultation Clinic (BBCC)
- 

Community Partnerships

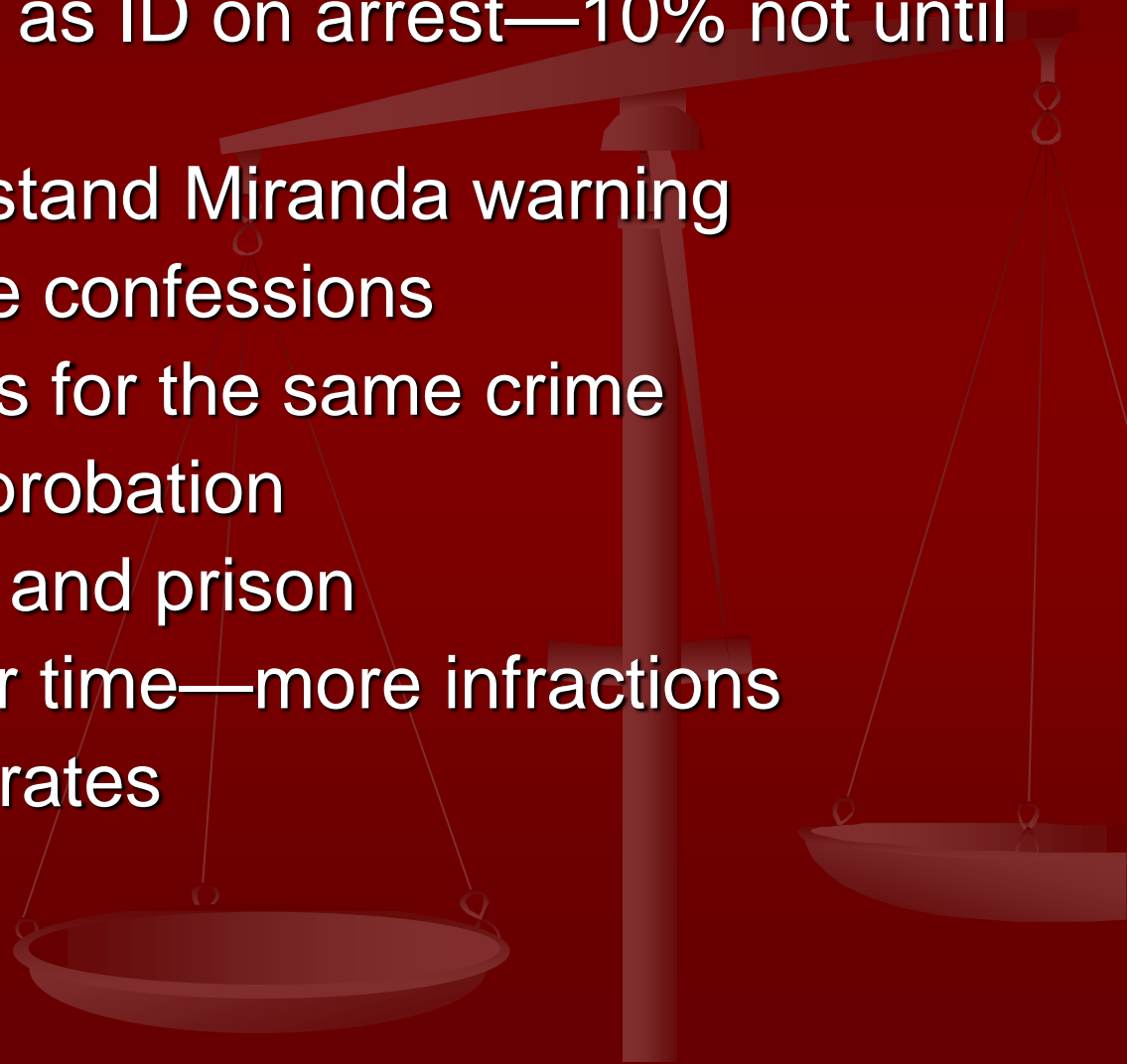
- Generic Resources (substance abuse programs, transitional housing, generic transgender/lesbian/gay support)
 - Los Angeles Police Department Gang Task Force
 - Memorandum of Understanding (MOU)
 - Probation
 - Jails
 - Department of Mental Health
 - Department of Children & Family Services
- 

Working with Courts and Public Defenders

- Juvenile Public Defender Resource Attorneys
- Court-appointed psychological evaluators for IST may also assess for intellectual disability
- Need for school records – PD can subpoena
- Need for contacts with informants who know the juvenile well (parents, custody staff, teachers)
- Since regional center involvement is voluntary and all homes are unlocked, court orders may be necessary for compliance with safety procedures and treatment

Why are forensic relationships important?

- 75% not identified as ID on arrest—10% not until in prison
- Often don't understand Miranda warning
- Vulnerable to false confessions
- Harsher sentences for the same crime
- Less likely to get probation
- More abuse in jail and prison
- Longer and harder time—more infractions
- Higher recidivism rates



Questions?

